



KEY GUIDE

Investing for children

Introduction

INVESTING FOR THE FUTURE

Most parents want to help their children financially, whether it is making sure there is enough money for their education or eventually helping them to buy a property. An early objective as they grow up may well be to help children understand the value and importance of money.

Whatever the reason, tax will be a major factor to consider, as will the risks of giving children too much money too soon. It is therefore important for parents and others to appreciate the basic tax and legal rules, and the investment products that are suitable for children, to help achieve the goals set for them.

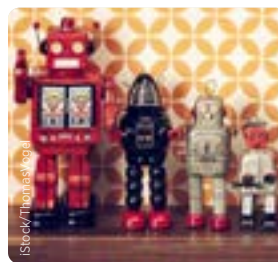
Please note that all examples included in this guide are fictitious.

Contents



HOW CHILDREN ARE TAXED

We are all subject to tax from birth, but planning can avoid unnecessary tax bills



THE TYPES OF TRUST

Finding the balance between flexibility and tax efficiency



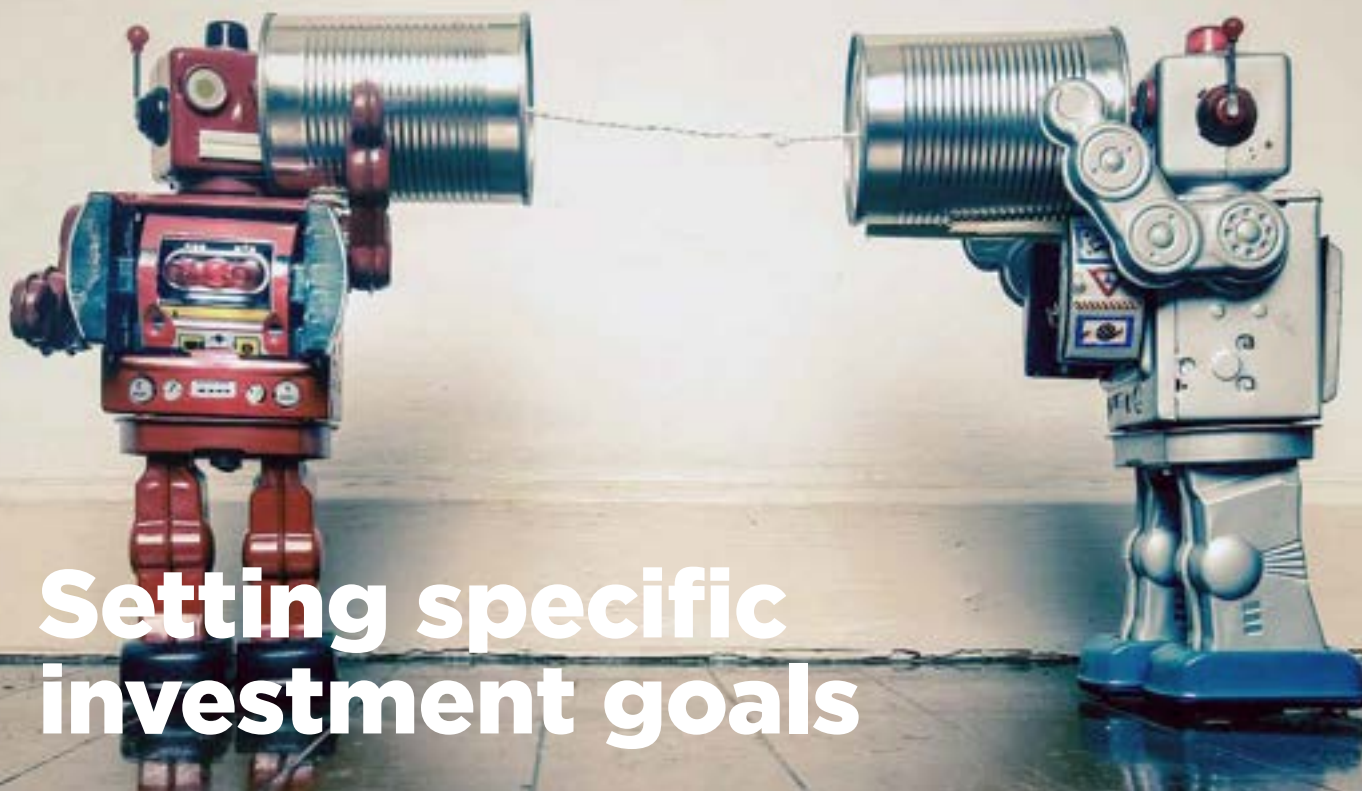
TAX-EFFICIENT INVESTMENTS FOR CHILDREN

How to use investment products to save money for children



HOW TRUSTS ARE TAXED

Understanding how the different types of trust are taxed



Setting specific investment goals

Why, when and for how long you plan to set aside money for children can have a major bearing on choosing the appropriate investments. As with any investment decisions, you need to think about risk carefully before taking any action.

Very broadly, the shorter the timescale, the more you should focus on cash and similar types of investment. If you are looking at five years or more, you should consider investments with a longer-term value, such as shares or property. They involve more risk, but historically provide superior returns over the longer term. The best approach to handling these matters is to consult a competent financial adviser.

Past performance should not be regarded as a guide to future performance. Future returns will depend on many factors which cannot be guaranteed.

HOW CHILDREN ARE TAXED

Children – even babies – are not exempt from tax. If they have enough income or capital gains, they will be subject to a tax bill just like adults. And like adults, they are generally entitled to a certain amount of income without paying tax. This is the personal allowance, which is £12,570. Each child has:

- a 0% starting rate band covering £5,000 of savings income in 2023/24;
- a dividend allowance of £1,000 in the current tax year, reducing to £500 in 2024/25;
- (assuming they do not pay tax at the higher or additional rate) a personal savings allowance of £1,000 in 2023/24;

- their own annual capital gains tax (CGT) exempt amount of up to £6,000 of net gains on investments in 2023/24, reducing to £3,000 in 2024/25.

There is a special rule that applies to children's income until the child reaches age 18 or gets married, if earlier. If the child's income is derived from a gift from a parent it is taxed as the parent's income, unless the income does not exceed £100 a year (£200 if both parents have contributed jointly).

EXAMPLE Parental gift

If Mary gives £20,000 to her 14-year-old son Jake, and this generates an income of £400 a year, this will be taxed as if it were Mary's income at her tax rate(s). It could not be set against Jake's personal tax allowance of £12,570, so the amount of tax Mary would have to pay would be dependent upon her tax position.

Fortunately, when a child's income is derived from non-parental sources it is taxed as the child's and can be set against their personal allowance. This might include income from investments financed by gifts from grandparents or others, or perhaps earnings from a weekend job or other work.

Where a child's income comes from investments funded by grandparents or others, you should identify it carefully to ensure that it does not suffer tax unnecessarily. So, it is a good idea to keep investments provided by parents separate from the money the child has received from other people.

EXAMPLE

Non-parental gift

Mary's father, Graham, is a higher rate taxpayer. If he gives £20,000 to his grandson Jake and it generates an income of £400 a year, this will be taxed as if it were Jake's income. It would neither be taxable on Graham nor Mary. The income would be set against Jake's personal tax allowance of £12,570, so would almost certainly be tax-free for him.

Banks, building societies and collective funds, such as unit trusts and open-ended investment companies (OEICs), which pay interest rather than dividends, do not deduct tax from interest payments, sparing non-taxpayers the potential hassle of tax reclaims.

Parents can still invest on their child's behalf without potentially giving themselves a tax liability by using special tax-efficient financial products.

Planning point

It is important for parents and others to know basic tax and legal rules, and also some of the investment products suitable for their children.

TAX-EFFICIENT INVESTMENTS FOR CHILDREN

Several financial products enable parents and others to invest tax efficiently for children. Of course, tax is not the only factor to consider. Aside from investment risk and reward, you need to think about the costs of investing; some investments can be significantly costlier to buy and hold than others.

Junior individual savings account

The Junior ISA (JISA) is like the adult ISA. It is a 'wrapper' that protects the investments and savings held within it from income tax and CGT. The JISA allows up to £9,000 in 2023/24 to be invested on behalf of a child in cash and/or a wide

variety of stock market-based investments. These range from individual shares in companies to UK-authorized unit trusts, OEICs and investment trusts.

Children can have one cash JISA and one stocks and shares JISA, but the combined total yearly investment must not exceed the annual maximum. To qualify, children must be under 18, live in the UK and not hold a child trust fund (CTF) account. Children aged 16 or 17 can open their own JISA, or take over management and be the registered contact for their existing JISA, but parents or adults with parental responsibility must open and manage these accounts for younger children.

Money in a JISA belongs to the child and cannot be withdrawn before they are 18. Adults can open and manage a Junior ISA for children under 18. At 16 or 17, a child can open their own JISA or ISA, but only the cash component.

Individual savings account (ISA)

Children aged 16 or 17 can invest in a full ISA, but only in the cash component. The contribution ceiling is £20,000 for full ISAs in 2023/24 and is in addition to the JISA allowance.

Investments in a Lifetime ISA (LISA) cannot be made before age 18 and are limited to a maximum of £4,000 in each tax year (plus up to a £1,000 bonus added by the government each year). LISAs are intended to support investors with buying a first home or saving for later life. If you incur a government withdrawal charge, however, you may get back less than the value you paid into a LISA. Investing in a LISA instead of a pension can affect the benefits you could get from an employer contributed pension and affect entitlements to means-tested benefits. Funds in a LISA count towards your overall ISA allowance.

Investors do not pay any personal tax on income or gains, but ISAs do pay unrecoverable tax on income from stocks and shares received by the ISA managers.

Stocks and Shares ISAs invest in corporate bonds; stocks and shares and other assets that fluctuate in value.



You will incur a lifetime ISA government withdrawal charge (currently 25%) if you transfer the funds to a different ISA or withdraw the funds before age 60 and you may therefore get back less than you paid into a lifetime ISA. Funds in a Lifetime ISA count towards your overall ISA allowance.

By saving in a lifetime ISA instead of enrolling in, or contributing to, an auto-enrolment pension scheme, occupational pension scheme, or personal pension scheme:

1. you may lose the benefit of contributions from your employer (if any) to that scheme; and
2. your current and future entitlement to means tested benefits (if any) may be affected.

Child trust funds (CTFs)

CTFs were the original long-term tax-free savings account for children, but the scheme is now closed. Very similar to JISAs, they were available for children born between 1 September 2002 and 2 January 2011, meaning that the first CTFs reached maturity in September 2020. CTF accounts retain their tax-free status after maturity, even if no action is taken by their owner. Nearly 30% of CTF funds were set up as default arrangements by HMRC, which is one reason why it has set up an online tool at www.gov.uk/child-trust-funds/find-a-child-trust-fund to help CTF owners and their parents trace their funds.

By April 2021, around 175,000 out of 320,000 18-year-olds had claimed and either withdrawn or re-invested a total of £376 million from their matured CTFs, according to HMRC. However, a further £394 million (an average of £2,717 per account) remained in unclaimed matured accounts. More recent research by the Investing and Saving Alliance estimated that, by August 2022, the proportion of CTFs that had matured at least one year earlier and which remained unclaimed had dropped to around 27%.

If a child has a CTF, they cannot have a JISA (and the reverse is also true). Originally, CTFs were set up to hold funds that the government granted to these children, so every child born between those dates has a CTF to which parents and others can contribute up to £9,000 in total. It is worth checking to see if a child's CTF has been invested in suitable funds; they can usually be switched if necessary.

The tax advantages and rules governing CTFs and JISAs are very similar. The funds are essentially free of UK tax and so are the proceeds on encashment. It is possible for CTFs to be transferred into JISAs, but once the transfer is completed, future contributions can only be made to the JISA.

Collective funds

If your child's JISA allowance has been used up for the tax year and you still want to invest more in stocks and shares on their behalf, you could consider collective funds – i.e. unit trusts, investment trusts or OEICs. If a trust is not used, investments in funds for children are usually held in a designated account, which is administered by the parents and remains the parents' for IHT purposes. Any income from funds paid for by a parent is treated for tax purposes as the parent's income.

Offshore funds

Non-reporting offshore funds allow for income and gains to be held free of UK tax until the investor disposes of them. At that point, they become subject to income tax in the investor's hands. Among other uses, this facility can allow parents to invest for a child without the income being subject to tax at parental rates. Then, when the child reaches age 18, the investment can be sold and set against the child's personal allowance, which would allow them to receive up to £12,570 free of income tax. If the child has no other income, the £5,000 0% savings rate band and £1,000 savings allowance would then apply before the basic rate at 20% is chargeable. This would mean that, in each of 2022/23 and 2023/24, £18,570 is free of tax with the next £31,700 taxable at 20%.

JISA/ISA/CTF 2023/24 summary

Product	Age range	Maximum investment	Notes
Cash ISA	16 upwards	£20,000	16- and 17-year-olds may start a cash ISA in addition to holding a JISA but can only use the cash component.
Junior ISA	Under age 18	£9,000	A child cannot also have a child trust fund (CTF).
Child Trust Fund	Born after 31 August 2002, but before 3 January 2011 and under age 18.	£9,000	A child cannot also have a JISA.
Help to Buy ISA (started before 1/12/19)	16 upwards	£200 a month	Counts towards ISA investment limit. New plans are no longer available, but existing plans can continue to receive contributions.

Life assurance investment bonds

These investments can be used to postpone the potential tax liability until a convenient time for them to be cashed in. Parents or others can invest in these bonds for the child – usually within a trust for the child. The investment bond produces no income for the trust itself and the funds within the bond are subject to tax at the life insurance company's rates. When the child reaches age 18 or over, the trustees can pass over the bond to the child who can encash it at the rates that apply to them that year.

Planning point

While it may seem early, setting up a pension for your child could offer tax-efficient investments and provide security for their later life.

There is little or no UK tax within offshore investment bonds, but the proceeds are potentially subject to starting rate (0%), basic rate (20%), higher rate (40%) and additional rate (45%) tax. (Scottish income tax rates and thresholds however do not apply to savings or dividend income). Gains will also count towards the personal savings allowance. UK investment bonds suffer some tax on the income and gains of the underlying funds, but they benefit from a tax credit for any basic rate tax that would be payable on the bond gains.

Investment bonds in trusts are very useful for larger investments for children, but their tax position can be complicated in some circumstances and it is especially wise to seek advice before either making or encashing such investments.

PERSONAL PENSIONS

The generous tax breaks and long investment term make pensions an effective way to invest for children.

- Anyone can contribute up to £3,600 gross in a tax year into a personal pension for a child.
- Contributions automatically benefit from basic rate tax relief (currently equivalent to an uplift of 25%), so only £2,880 needs to be paid into the scheme, with the government making up the balance.
- Returns roll up broadly UK tax-free within the fund, and ultimately up to 25% of the pension fund can be taken as a tax-free lump sum with the rest of the fund drawn as taxable payments.

Contributions made to a child's pension do not count against the contributor's own pension contribution annual allowance and they may also help with the contributor's inheritance tax (IHT) planning. However, the child will not be able to draw the pension until they are within ten years of state pension age, which is now under review and is likely, although not confirmed, to rise to 68 by 2039.



Friendly society bonds

Some friendly societies offer tax-free savings schemes for children which can be designed specifically to mature for a significant event, like an 18th or 21st birthday, starting university or graduation. The maximum investment is £25 a month or £270 a year and bonds must last for at least 10 years for the proceeds to be free of income tax and CGT. Although the premiums on these schemes are low, the charges can be high.

SHOULD YOU USE A TRUST?

If you are planning to set aside money for the long-term future benefit of a child, you may want to use a trust.

A trust is basically a way for one group of people (the trustees – who could include you) to hold investments or other assets for the benefit of some other people – called beneficiaries. Using a trust can also help IHT planning by allowing you to transfer the assets outside your taxable estate. A trust can also control when the children will have access to the funds.

There are several types of trust with different tax and other legal characteristics. They all have different advantages and drawbacks, but there are two main kinds of trust in this context.

Bare trusts

These are sometimes called simple or absolute trusts, and are the most commonly used trusts for gifts to children. The beneficiary – in this case the child – is absolutely and immediately entitled to the income and capital held in the trust.

The assets are held in the name of the trustees, who manage and make decisions about the trust until the beneficiary reaches the age of 18 (16 in Scotland). At this point, beneficiaries can demand that trustees transfer the trust fund to them.

Discretionary trusts

The trustees can decide how much income and/or capital each beneficiary should receive and when. Discretionary trusts are sometimes used to provide for future needs that might not yet have developed, or for beneficiaries who are not capable or responsible enough to deal with money themselves.

Bare trusts are generally more tax-efficient than discretionary trusts, but are rather rigid and inflexible. By contrast, discretionary trusts often involve additional tax costs, but provide greater flexibility. An important advantage of discretionary trusts is that you do not have to pass over assets to children when they reach the relatively young age of 18 (16 in Scotland).

TAX POSITION OF TRUSTS

Trusts can help to ensure that your money is used as you intend for the benefit of children or grandchildren. But they do not necessarily reduce overall tax liabilities, and in some cases a trust might increase the amount of tax to be paid. For example, you could incur IHT on a large lifetime gift into a discretionary trust. As a rule, new (and existing) trusts now need to be registered with the HMRC Trust Registration Service.

Income tax and trusts

The beneficiary of a bare trust is liable for tax on income that the trust receives unless the parental settlement rules apply, although the trustees can pay this tax on their behalf. Beneficiaries should notify their tax office of the income and fill in the appropriate self-assessment tax return form.

The rate of tax on the income from investments held in a discretionary trust depends on the type of income and whether it falls within the 'standard rate band' – up to the first £1,000 of income.

The tax band's size varies according to whether the settlor – the person who has set up the trust – has established any other trusts. Where the settlor has set up other trusts, the £1,000 band will be split equally between them, subject to a minimum band of £200. So, if the settlor has set up five or more trusts, each trust will benefit from £200 of income taxed at the standard rate.

You apply the standard rate band first to non-dividend income and then to dividend income. The dividend allowance is not available to trusts, but dividends falling within the standard rate band are taxable at 8.75% in 2023/24.

Income paid by a discretionary trust to a beneficiary is treated as having already been taxed at 45% – the current rate for trusts. If the beneficiaries themselves pay tax at a lower rate, they should be able to reclaim some of this. A beneficiary who



does not pay tax, or who pays tax at below the additional rate, may be able to claim some or all of the tax back. If they pay tax at the additional rate, there will be no more tax to pay on the trust income outside Scotland, where there will be an extra 2% tax to pay because the Scottish top rate is 47%.

EXAMPLE

Discretionary trust taxation

The Little Harry Discretionary Trust receives £1,500 of interest and £2,000 of dividends. It is one of four separate trusts that Philip set up for his grandchildren, so the trust's standard rate band is £250 (£1,000/4). The trust's tax bill will be:

Income	Amount		2023/24
	£	Tax Rate %	Tax £
Interest	250	20	50.00
Interest	1,250	45	562.50
Dividend	2,000	39.35	787.00
Total	3,500		1,399.50

If Philip had made his gift via a bare trust for Harry's benefit, there would probably have been no tax to pay thanks to Harry's personal allowance.

Capital gains tax and trusts

If you set up a trust you may have to pay CGT when you set it up. This could be because you either sell some investments to put cash into the trust – potentially realising a profit – or because you simply transfer some of your own existing assets into it. However, if you use a discretionary trust you could postpone the CGT liability by claiming hold-over relief; the trustees would then pay tax on the held-over gain when in turn they sell or transfer the asset, although on transfer they too have the option of claiming hold-over relief.

Trustees are potentially subject to CGT on investments if they realise profits by selling them or transferring them to the beneficiaries. The position varies, mainly depending on the type of trust involved.

- In the case of a **bare trust**, the investments are taxed as if the beneficiary owns them. If the trustees realise gains on any investments, these are taxed on the beneficiary and set against their annual exempt amount. If the gains are large enough to be taxable, the tax rate(s) will generally be 10% and/or 20%, depending on the beneficiary's own level of income and gains. Residential property gains attract an 8% surcharge.
- Gains within **discretionary trusts** are not taxed by reference to the beneficiaries. The trustees have an annual exempt amount of up to £3,000 in 2023/24 (and £1,500 in 2024/25), although the amount will be less if the settlor has set up any other trusts. The minimum is £600 in 2023/24 (and £300 in 2024/25). Any net gains that exceed the available allowance are taxed at a flat rate of 20% (or 28% for residential property).

A CGT liability may also arise when assets are distributed from the trust. In a discretionary trust, the trustees would normally be liable to pay the tax (unless hold-over relief is claimed). This is not the case in a bare trust, when the beneficiary is 'absolutely entitled' to the trust assets, usually because they have reached age 18, or the trust has come to an end. A CGT liability would also arise for the trustees if the trust became non-resident.

Planning point

If you use a discretionary trust you could postpone the CGT tax liability by claiming hold-over relief; the person who receives the asset would then pay tax on the held-over gain when in turn they sell or transfer the asset.

Inheritance tax and trusts

There is a possibility of incurring an IHT charge on transfers into a trust. If you make an outright gift to an individual, or place it into a bare trust, there could be an IHT charge of up to 40%, but only if you were to die within seven years of making the transfer.

If you make a transfer into a discretionary trust of more than the amount of your unused nil rate band (until at least April 2028 the full band is £325,000), you will have to pay an IHT charge of up to 20% on the excess. If you die within five years of making the gift, there could be a further tax charge to bring the total up to a maximum of 40%. This is less than the usual seven-year period, because the taper relief will eliminate any additional tax after just five years. There could also be further relatively small IHT charges for the trust every ten years that the trust continues and then when assets leave the trust.

Trusts and trust investments are not an area for do-it-yourself tax and financial planning. The position is complicated, and the law and HMRC practice change frequently.

Stocks and Shares ISAs invest in corporate bonds; stocks and shares and other assets that fluctuate in value.

Tax treatment varies according to individual circumstances and is subject to change.

Investing in shares should be regarded as a long-term investment and should fit in with your overall attitude to risk and financial circumstances.

Past performance is not a guide to future performance.

The value of investments and income from them can go down as well as up, and you may not get back the original amount invested.

The Financial Conduct Authority does not regulate tax and trust advice, will writing, National Savings and Investments, inheritance tax and some forms of estate planning.



HOW WE CAN HELP

Planning for your child's future is one of the most important things you will ever do, and we are here to advise you about the most suitable way to achieve your aims and to help ensure that your investments produce the outcomes you want for your children.

We can help in a range of ways. We are very willing and prepared to work with your other professional advisers. The scope of our work can include:

- Comprehensive financial planning for your family's finances and estate planning.
- Investment planning for yourself, your family and any trusts, from asset allocation to investment selection.
- IHT mitigation.
- Advice on the choice of appropriate trusts.
- School fees and other educational costs planning.

**Simpson Financial Services Limited**

23a Cross Street
Royal Leamington Spa
Warwickshire
CV32 4PX
Tel: 0800 6342 111
Email: office@simpsonfs.co.uk
Web: www.simpsonfs.co.uk

Rob Simpson DipPFS - Managing Director and Independent Financial Adviser
Michael Hinett APFS - Chartered Financial Planner
Malcolm Clarke AdvCeMap, Cert PFS - Independent Mortgage Consultant
Natasha Palmer Cert CII (MP) - Director and Mortgage Capacity Assessment Specialist
Lisa Simpson - Trustee Accounts Specialist
Christian Wilson DipPFS - Independent Financial Adviser
Hannah Stanley DipPFS - Independent Financial Adviser

Simpson Financial Services Limited is Authorised and Regulated by the Financial Conduct Authority.