

AEGON Global Equity

Fund objective

To provide capital growth by exploiting special investment situations and opportunities throughout the world by investing globally.

Detailed fund information

Unit name AEGON Global Equity

Crown rating



OBSR rating n/a

S&P rating n/a

Sector Global Growth

Launch date 30-Oct-1987

Fund size (as at 31-Aug-2010) £ 7.9m

Primary asset class Equity

Price and charges

Mid price (as at 04-Oct-2010) GBX 87.78

Initial charge 5.50%

Annual charge 1.50%

Investment

Minimum initial £500

Minimum additional £100

Dividend policy

Codes

Citicode SN10

SEDOL 0725422

Management information

Fund manager Innes McKeand

Start date 01-May-2009

Address Mellon European Fund Services, Mellon House, Ingrave Road, Brentwood

Tel 0800 032 6021 (Broker Line)
0800 454 422 (Dealing & Administration)
0131 549 4263 (Fax Number)

Website <http://www.aegonam.co.uk/>

Email investorhelp@abetterway.co.uk

Past performance overview fund vs. sector



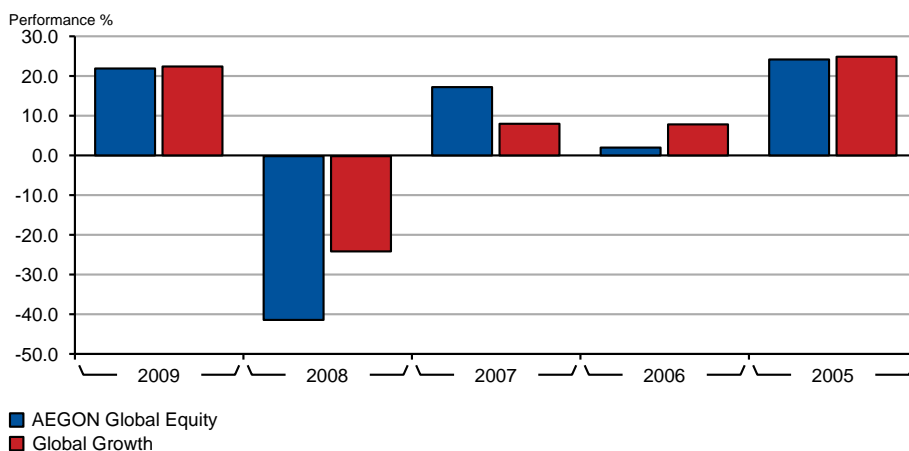
04/10/2005 - 04/10/2010 © Financial Express Holdings 2010

Cumulative performance (%)

	1m	3m	6m	1y	3ys	5ys
AEGON Global Equity	+4.3	+11.3	-9.5	+4.5	-25.3	-7.1
Global Growth	+3.9	+9.5	-2.0	+10.8	-2.6	+21.0

Performance figures are calculated on a bid price to bid price basis. All prices in Pence Sterling (GBX) unless otherwise specified.

Discrete calendar year performance



© Financial Express Holdings 2010

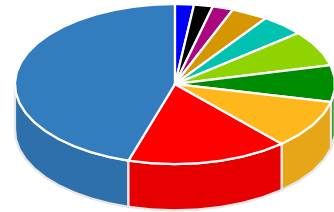
Discrete performance (%)

	YTD	2009	2008	2007	2006	2005
AEGON Global Equity	-0.7	+22.1	-41.4	+17.4	+2.2	+24.4
Global Growth	+5.4	+22.6	-24.2	+8.2	+8.0	+25.0

Performance figures are calculated on a bid price to bid price basis. All prices in Pence Sterling (GBX) unless otherwise specified.

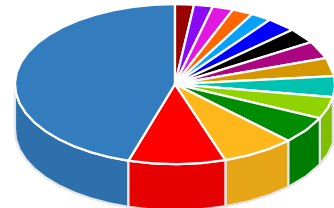
Asset allocation

Key	Rank	Asset class	% of Fund (31.08.2010)	% of Fund (30.07.2010)
A	1(1)	US Equities	45.3	(46.0)
B	2(2)	Europe ex UK Equities	16.3	(17.6)
C	3(3)	Japanese Equities	9.8	(9.4)
D	4(4)	International Equities	7.4	(7.6)
E	5(5)	Asia/Pacific Equities	7.2	(7.2)
F	6(6)	Australian Equities	4.4	(4.6)
G	7(7)	Asia/Pacific Emerging Equities	3.7	(3.7)
H	8(-)	UK Equities	2.1	(-)
I	9(9)	American Emerging Equities	1.9	(1.9)
J	10(8)	Irish Equities	1.9	(2.0)



Regional breakdown

Key	Rank	Region	% of Fund (31.08.2010)	% of Fund (30.07.2010)
A	1(1)	USA	45.3	(46.0)
B	2(2)	Japan	9.8	(9.4)
C	3(3)	Others	7.4	(7.6)
D	4(4)	Germany	5.5	(6.4)
E	5(5)	Australia	4.4	(4.6)
F	6(6)	China	4.2	(4.1)
G	7(7)	India	3.7	(3.7)
H	8(10)	Switzerland	3.5	(2.5)
I	9(9)	Belgium	3.1	(3.0)
J	10(8)	Hong Kong	3.0	(3.1)
K	11(11)	France	2.1	(2.1)
L	12(13)	Norway	2.1	(2.0)
M	13(-)	UK	2.1	(-)
N	14(12)	Ireland	1.9	(2.0)
O	15(14)	Brazil	1.9	(1.9)



Sector breakdown

No Breakdown Data available

Top ten holdings

Rank	Holding	% of Fund (31.08.2010)	% of Fund (30.07.2010)
1(1)	ANHEUSER-BUSCH INBEV SA	3.3	3.0
2(2)	PEPSICO INC	3.1	2.8
3(4)	PHILIP MORRIS INTERNATIONAL INC	2.7	2.4
4(3)	UNITED PARCEL SERVICE INC	2.7	2.5
5(8)	NEWCREST MINING	2.6	2.1
6(5)	SIEMENS AG	2.4	2.3
7(9)	SEADRILL LTD	2.3	2.0
8(7)	LVMH MOET-HENNESSY LOUIS VUITTON	2.2	2.1
9(6)	CISCO SYSTEMS INC	2.2	2.2
10(-)	CENTAMIN EGYPT	2.1	-